

PH-50B | 41912-100

# Newborn Whole Body Phantom "PBU-80"

Dosimetry

CT

X-ray



A brand-new neonate for CT has come into the world



SHOW MORE!



ANTHROPOMORPHIC PHANTOMS

## FEATURES

- | Limbs rotate 360 degrees at shoulders and hip joints
- | Left hand is clenched and right hand is open
- | Kyoto Kagaku original human tissue substitute
- | A hole for an ion chamber
- | HU of average newborn

## APPLICATIONS

- | CT and plain X-ray
- | Dosimetry
- | Autopsy imaging
- | Positioning: upright AP/ supine AP/ upright lateral/ supine lateral

## ANATOMY

skull/ spine/ clavicles/ scapulae/ ribs/ humerus/ radius/ ulnae/ bones of hands/ femora/ tibiae/ fibula/bones of foot/ pelvis/ lungs/ mediastinum/ colon

## DESCRIPTIONS

### SET INCLUDES

- 1 newborn whole body phantom
- 1 set of sample X-ray data (DVD)
- 1 storage case

manual

### MATERIALS

Soft tissue: urethane based resin (specific gravity: 1.06)  
 Synthetic bone: epoxy resin (specific gravity: 1.31)  
 \*Phantom has no metal parts or liquid structure

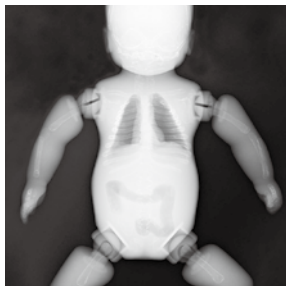
### SPECIFICATIONS

Phantom size:	Phantom weight:	Packing size:	Packing weight:
53 cm	3.5 kg/ 7.7 lb	W57 x D44 x H29 cm	8 kg/ 17.6 lb
20.8 in		W22.4 x D17.3 x H11.4 in	

PH-50 | 41912-000

# Newborn Whole Body Phantom

X-ray



SHOW MORE!



## ANATOMY

Common with PBU-80

\*Meconium aspiration syndrome can be made per custom order

## DESCRIPTIONS

SET INCLUDES Common with PBU-80

MATERIALS Common with PBU-80

### SPECIFICATIONS

Phantom height:	Phantom weight:	Packing size:	Packing weight:
42 cm	2.8 kg/ 6.2 lb	W57 x D44 x H29 cm	8 kg/ 17.6 lb
16.5 in		W22.4 x D17.3 x H11.4 in	

